

# Champion<sup>®</sup>

The Dishwashing Machine Specialists

Project \_\_\_\_\_  
Item No. \_\_\_\_\_  
Quantity \_\_\_\_\_

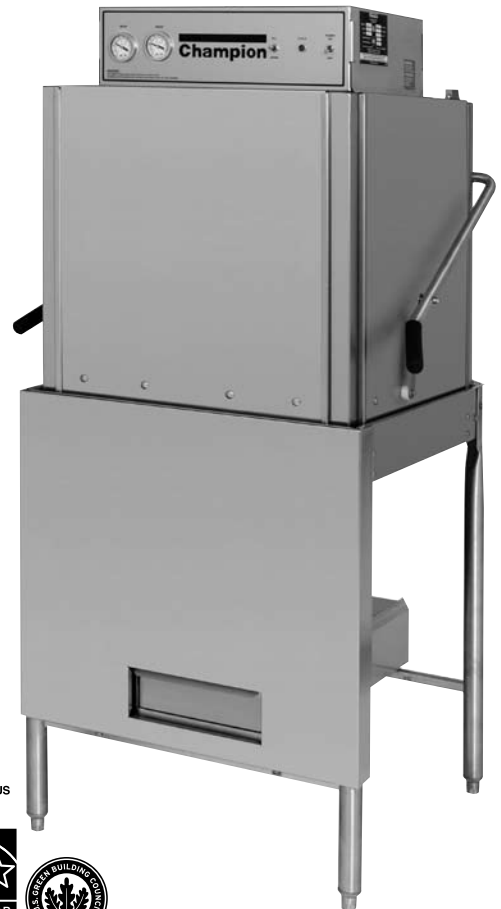
**DH-1000 DOOR-TYPE**

## DH-1000

Door-type  
High Temperature  
Dishwashing Machine

### STANDARD FEATURES

- Straight-through or corner application – simple conversion in a matter of minutes
- Parts compatibility with other machines
- Superior wash results – unique sump design and the vertical mount, self-draining pump provides quick wash water flow and an ample 55-second wash time that produces sparkling clean wares.
- Direct replacement – the DH-1000 is a direct replacement for most competitor's models without table modification.
- Machine fully assembled, ready to install
- 1 Hp pump, TEFC motor, vertically mounted, self-draining
- Door safety switch
- Interchangeable upper and lower spray arms
- Airgap design feature eliminates vacuum breaker
- Built-in 40°F rise stainless steel electric booster
- Rinse Sentry – extends the cycle time to ensure 180°F final rinse
- Common utility connections
- Pumped rinse ensures consistent rinse results



### OPTIONS & ACCESSORIES

- 70°F built-in rise stainless steel electric booster
- Detergent pump and rinse pump
- 20" x 20" Peg Rack (not included)
- 20" x 20" Flat Bottom Rack (not included)
- Vent fan control

### SPECIFIER STATEMENT

Specified unit will be Champion model DH-1000 high temperature door-type dishwashing machine.

Constructed of Type 304 stainless steel. Features 1 Hp TEFC pump motor, top mounted controls, balanced door lift system, common utility connections and interchangeable upper and lower spray arms.

Champion Industries, Inc.  
P.O. Box 4149, Winston-Salem, NC 27115  
Tel: 336/661-1556 Fax: 336/661-1979  
[www.championindustries.com](http://www.championindustries.com)

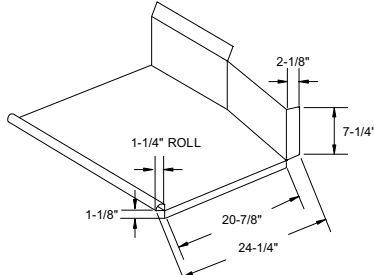
# DH-1000

Door-type  
High Temperature  
Dishwashing Machine

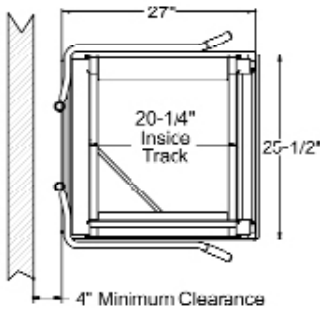
# Champion®

The Dishwashing Machine Specialists

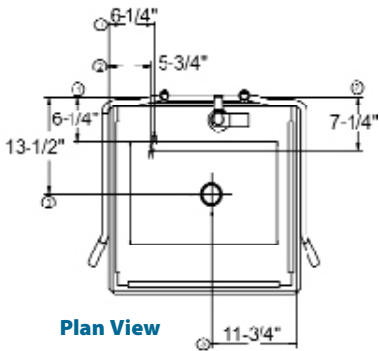
Volume crated: **45 cu. ft.**  
Shipping weight crated: **242 lbs.**  
Distance between tables: **25-3/8"**



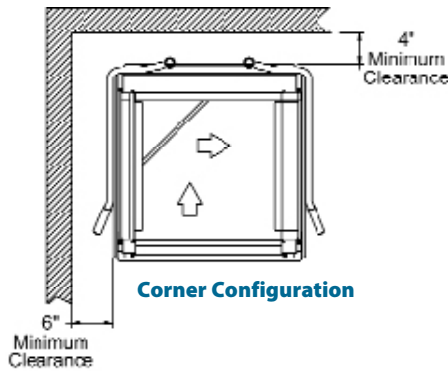
**Typical Table Construction**



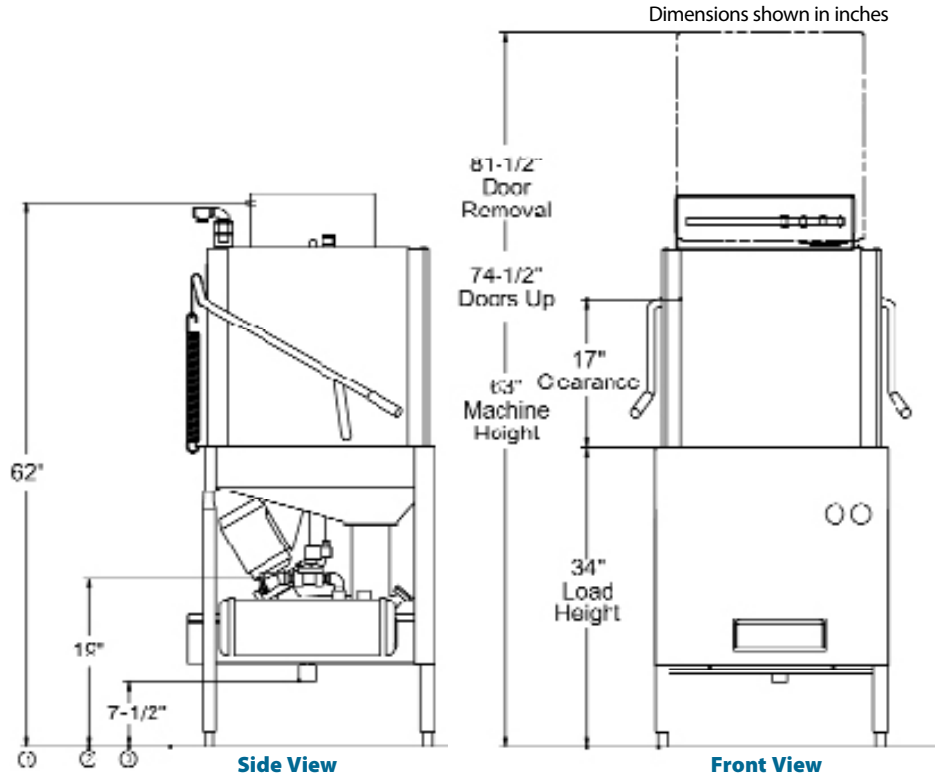
**Straight Through**



**Plan View**



**Corner Configuration**



**Side View**

**Front View**

Dimensions shown in inches

## SPECIFICATIONS

<b>Capacities</b>		
Racks per hr.		37
<b>Motor horsepower</b>		
Wash		1 Hp
<b>Water consumption</b>		
U.S. Gal. per rack		1.7
<b>Temperatures °F</b>		
Wash		150
Rinse		180
<b>Time Cycle in Seconds</b>		
Wash		55
Drain/Fill/Dwell		12
Rinse		23
Total cycle		90

DH1000 Electrical (40°F Rise) 9 kW			
Elec. Specs.	Rated Amps	Minimum Supply Ckt. Conductor Ampacity	Maximum Overcurrent Protective Device
208/60/1	47	60	60
230/60/1	50	60	60
208/60/3	25	35	35
230/60/3	27	35	35

DH1000 Electrical (70°F Rise) 12 kW			
Elec. Specs.	Rated Amps	Minimum Supply Ckt. Conductor Ampacity	Maximum Overcurrent Protective Device
208/60/3	38	50	50
230/60/3	41	50	50

## Utilities

- Electrical** (see box)
- Hot Water**  
3/4" NPT 140°F hot water connection (40°F rise booster); 3/4" NPT 110°F hot water connection; (70°F rise booster)  
Flow pressure 20±5 psi
- Drain**  
1-7/8" connection.

**Warning:** Plumbing and electrical connection should be made by qualified personnel who will observe all the applicable plumbing, sanitary and safety codes and the National Electrical Code.

**Plumbing Notes:** Because of the variation in house-supplied water, a pressure regulating valve (PRV) for incoming water supply is needed. The PRV can be purchased from Champion or obtained locally. It is also recommended that a pressure gauge 0-60 psi (supplied by others) be installed in the water supply line as close to the dishwasher as possible.

**Note:** Water Hammer Arrestor (meeting ASSE-1010 standard or equivalent) to be supplied (by others) in common water supply line at service connection.

Due to an ongoing value analysis program at Champion, specifications contained in this catalog are subject to change without notice. 'USGBC' and related logo is a trademark owned by the U.S. Green Building Council and is used by permission.