

Champion®

The Dishwashing Machine Specialists

Project _____
 Item No. _____
 Quantity _____

UH-170B UNDERCOUNTER

STANDARD FEATURES

- **ENERGY STAR® Qualified**
- **NEW "Shear Energy"** – a reduction in energy requirements while maximizing performance!
- **NEW "Multi-Phase"** – allows for infield conversion from single to three phase electrical with ease!
- Rinse Sentry – extends the cycle time to ensure 180°F final rinse.
- Built-in electric booster for 180°F final rinse water (standard 40°F or optional 70°F rise)
- Pumped drain
- Door safety switch
- Low-water tank heat protection
- Detergent and rinse aid pump
- Quiet double-wall construction
- Independent stainless steel interchangeable upper and lower wash and rinse arms
- Fresh water rinse
- Top mounted slide-out controls
- Stainless steel top and side panels
- 90-second total cycle time
- Extended wash for difficult ware cleaning & de-liming
- Automatic drain cycle
- 1 Hp motor
- Stainless steel construction

UH-170B

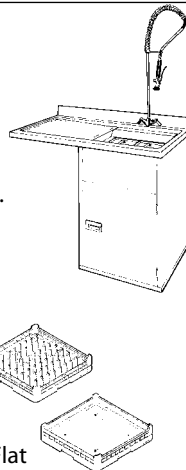
Undercounter High Temperature Dishwashing Machine with Built-in Booster Heater

UH-170 Model without Booster Heater



OPTIONS & ACCESSORIES

- 1-RDT Dish Table** Durable, heavy-gauge stainless steel dish table with sink, stand-pipe drain, removable scrap screen holder, drain-board, backsplash and lower storage cabinet. Sprayhose is optional. See 1-RDT catalog sheet. Specify right hand or left hand sink.
- Additional Dish Racks**
- 17" Rack Stand**
Stainless Steel
- 6" Leg Stand**
- 3 Phase Connection**
- 70°F Rise Booster**
- UH170 without Booster**



SPECIFIER STATEMENT

Specified unit will be Champion model UH-170B undercounter high temperature dishwashing machine with built-in booster heater.

Features 90 second total cycle, extended wash, analog controls, Rinse Sentry, detergent and rinse aid pump, top and side panels. Constructed of stainless steel. 1 year parts and labor warranty.

Champion Industries, Inc.
 P. O. Box 4149, Winston-Salem, NC 27115
 Tel: 336/661-1556 Fax: 336/661-1979
www.championindustries.com

UH-170B

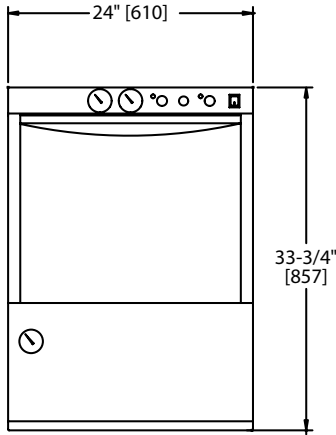
Undercounter High Temperature Dishwashing Machine with Built-in Booster Heater

Champion®

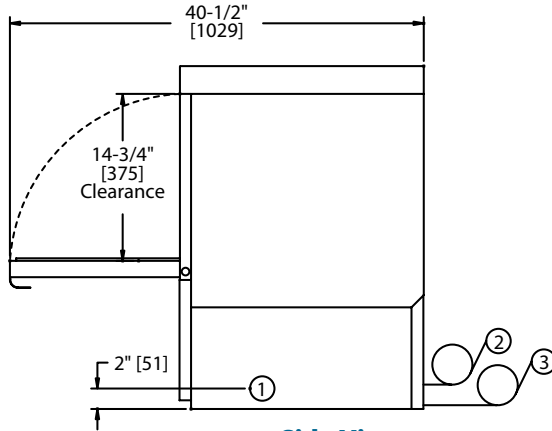
The Dishwashing Machine Specialists

Dimensions shown in inches and [millimeters]

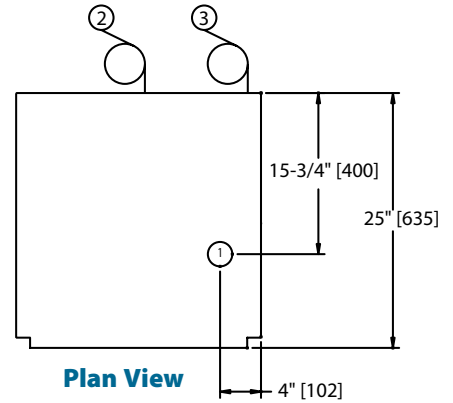
Volume crated: 15 cu. ft.
Shipping weight crated: 215 lbs.



Front View



Side View



Plan View

| Utilities | |
|-----------|---|
| 1 | Electrical 208-240/60/1; 3 wire plus ground, (See Box). 208-240/60/3; 4 wire plus ground, (See Box). |
| 2 | Hot Water 1/2" supply; 140°F Min. hot water connection for 40°F rise booster; 110°F Min. hot water connection for 70°F rise booster. Incoming supply pressure must maintain a Flow pressure 20-22 PSI (Pressure reducing valve, PRV, supplied by customer or may be purchased unmounted from Champion). Machine equipped with 3/4" hose connector. |
| 3 | Pumped Drain 5/8" I.D. flexible reinforced hose, 6 ft. long. Max. drain flow 15 US gpm. Max. drain height 3 ft. |

SPECIFICATIONS

Capacities

| | |
|----------------------|----|
| Cycle time (seconds) | 90 |
| Racks per hr. (NSF) | 30 |

Motor horsepower

| | |
|------|---|
| Wash | 1 |
|------|---|

Water consumption

| | |
|------------------------------|------|
| U.S. Gal. per hr. (Max. use) | 28.2 |
| U.S. Gal. per rack | .9 |

Temperatures °F

| | |
|-------|-----|
| Wash | 150 |
| Rinse | 180 |

Heating

| | |
|--|-----|
| Tank heat, electric, kW | 2.0 |
| Electric booster (kW) required for 40°F rise | 6 |
| Electric booster (kW) required for 70°F rise | 9 |

Time Cycle in Seconds

| | |
|-------------|----|
| Wash | 70 |
| Rinse | 15 |
| Total cycle | 90 |

Standard 20" x 20" Rack Complement

| | |
|------|---|
| Dish | 1 |
| Open | 1 |

UH-170B with 40°F/22°C Rise Booster

| Elec. Specs. | Rated Amps | Minimum Supply Ckt. Conductor Ampacity | Maximum Overcurrent Protective Device |
|--------------|------------|--|---------------------------------------|
| 208/60/1 | 32 | 40 | 40 |
| 240/60/1 | 36 | 40 | 40 |
| 208/60/3 | 22 | 30 | 30 |
| 240/60/3 | 24 | 30 | 30 |

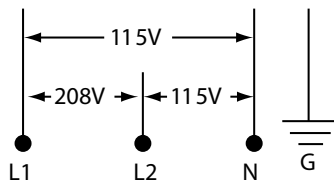
UH-170B with 70°F/39°C Rise Booster

| Elec. Specs. | Rated Amps | Minimum Supply Ckt. Conductor Ampacity | Maximum Overcurrent Protective Device |
|--------------|------------|--|---------------------------------------|
| 208/60/1 | 45 | 60 | 60 |
| 240/60/1 | 50 | 60 | 60 |
| 208/60/3 | 29 | 35 | 35 |
| 240/60/3 | 33 | 40 | 40 |

Field convertible to accept 3 phase power

Warning: Plumbing and electrical connections should be made by qualified personnel who will observe all the applicable plumbing, sanitary and safety codes and the National Electrical Code.

| UH-170 without booster 750 watt tank heat | |
|--|------------|
| Elec. Specs. | Rated Amps |
| 115/60/1 | 12 |



Note: Electrical supply service must be a 3-wire ground for connection shown.